



Opera 3 upgrade guide

More features to improve your business



One System. One Solution.

Full integration across your entire business



A guide for Pegasus customers

Improving the way you work is our line of work

Protect the future of your business by upgrading to Opera 3, our award-winning flagship solution. We've added lots of new features and enhanced many areas to help you improve the way you work.

Improved reporting is a key benefit, with over 60 reports you can export directly to Excel®. Opera 3 also offers open period accounting, error correction functionality in the ledgers, the ability to connect with your Opera 3 data remotely with Pegasus Web Xchange, and a whole host of other features designed to help you increase your visibility of the business and improve efficiency and decision-making.

What's more, Opera 3 offers you the option of cloud deployment, so your entire business solution will be accessible at any time, from any device, and you'll save on hardware infrastructure and maintenance costs.

Upgrading is easy with the help and support you'll receive from your Pegasus Partner. The implementation process is straightforward and minimal training is required, so you can start reaping the benefits straight away.



"I believe Opera 3 is the ideal solution for a growing company like Rigby and Peller, who need more flexibility and reporting features. This has allowed smarter decision-making which will no doubt help our long term strategies"

Amna Ijaz, Financial Controller, Rigby & Peller



Opera 3 unique features



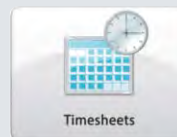
page 4-5
Easier data manipulation and analysis



page 14
Connecting your sales team on the road with your office



page 6-7
Flexibility to post in past and future periods



page 15
Easily track time



page 8
Simplified corrections in the ledgers



pages 16-17
For an accurate valuation of your stock costs



page 9
Manage customer debt effectively to improve cashflow



page 18
Keep track of stock levels



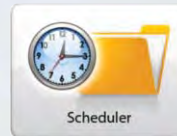
page 10
Reduce costs and admin time when running your payroll



page 19
File your VAT return online



page 11
Salary Sacrifice in Payroll



page 20
Run key tasks when it suits the business



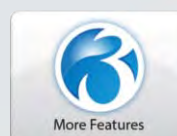
page 12
Connect with your Opera 3 data remotely



page 21
Mobile, flexible and secure



page 13
Empower employees and lower HR costs



page 22
More features to improve your business

Take a look at the new features on www.pegasus.co.uk/demos
For more information, contact your Pegasus Partner
or contact **Pegasus** on 0800 919 704.



Export Opera 3 reports to Excel

For data manipulation and analysis

This feature imports the information from an Opera 3 report directly into the cells of an Excel® spreadsheet and sets the height of the rows and width of the columns to achieve the desired layout. No re-keying is necessary and you know the data is accurate. All numeric information can be used in calculations and you can modify the report as required, in the familiar Excel environment.

All reports created in the Reporter application can be exported to Excel, as well as over 60 other reports across Opera 3:

Sales Ledger

- Credit Control
- Currency Revaluation
- Debtors Report
- Disputed Invoices
- Revenue Forecast
- Invoice & Credit Note Listing
- Realised Gains/Losses
- Turnover Report
- Receipts & Adjustments Listing
- Account View – Transactions
- Analysis – VAT Analysis, Transaction List and user-defined reports

Purchase Ledger

- Creditors Report
- Invoice & Credit Note Listing
- PIR Invoices & Credit Note
- Payments & Adjustments Listing
- Suggested Payments
- Payments Forecast
- Held Invoices
- Turnover Report
- Realised Gains/Losses
- Currency Revaluation
- Account View – Transactions
- Analysis – VAT Analysis, Transaction List and user-defined reports

Nominal Ledger

- Trial Balance
- Audit Trail
- Summary
- Income
- Expenses
- Assets
- Liabilities
- Capital/Reserves
- Budgets List
- Analysis
- Account Snapshot
- Account Transactions
- Account View – History
- Account – View History – Transactions

Sales Order Processing

- Order Listing
- Suggested Invoice Listing
- Suggested Delivery Listing

Payroll & HR

- Auto enrolment global changes
- Calculation Audit
- Training Costs
- This Period Summary
- To Date Summary

CRM

- SPM: Sales Pipeline Report, Telephone List, Company List, Contact List, Activity List
- Helpdesk Management: In-Tray and SLA Monitor
- Service Management: Contract List, Contract Cost List, Equipment List

Further reports that can be exported to Excel

- System Summary VAT Audit Report
- System Summary VAT Values
- Detailed VAT Audit Trail
- Detailed VAT Values
- Purchase Order Processing Order Listing
- Credit Management Promised Payments
- Credit Management Diary Actions
- Cashbook Report
- Costing Transaction Report
- Stock Movements Report
- Stock Valuation Report
- Historical Stock Valuation
- EC VAT: ESL Audit Trail
- EC VAT: SD Audit Trail
- EC VAT: VAT Reconciliation
- System Exchange Rates

Importing information from Excel into Opera 3

The following Opera 3 applications include the facility to import records from spreadsheets:

Fixed Assets: you can import assets from a spreadsheet.

CRM: you can import customers, contacts and prospects from a spreadsheet.



"The main reason for the move from Opera II to Opera 3 was the improved reporting functionality, especially exporting into Excel which makes viewing data far easier for non-Opera 3 users."

Jerry Anderson, Director, Agripower Contractors

Improved reporting

Report previews

You can view more than one report at a time. Each report is displayed in a separate Report Preview form. For example, you can view the Depreciation report in Fixed Assets at the same time as viewing the Receipts and Adjustments report in the Sales Ledger.

When you choose to view a report on your screen, it's displayed in the Report Preview form so that, if required, you can check it before printing. You can also search for text in the report, use Zoom to make the details easier to read, print an individual page, and move from page to page quickly. For most reports that are opened from the various Reports menus you can leave the Report Preview form open while you work in other areas.

Chart Views

Opera 3 includes powerful and versatile chart views so you can view data in an easy-to-understand graphical format. Charts can be copied to the Windows Clipboard, saved as a graphical file on your computer, or printed. You can choose colour themes when you view a chart and view as many charts as you need at the same time. So, if you want to compare different groups of information, such as supplier accounts, you can open as many chart forms as you need. Or, if you wanted to compare the turnover of two different customer accounts, you can do this by positioning a chart for the first account next to a chart for the second account.

You can view the same information in different types of charts at the same time. For example, you can view a customer's turnover in both a vertical bar chart and a horizontal bar chart. Other charts, like the Pie Chart and Doughnut Chart, only display one category of information.

Retrospective Debtors and Retrospective Creditors reports

Retrospective Debtors and Retrospective Creditors reports can be extremely useful, particularly for auditing purposes at period-end or year-end.

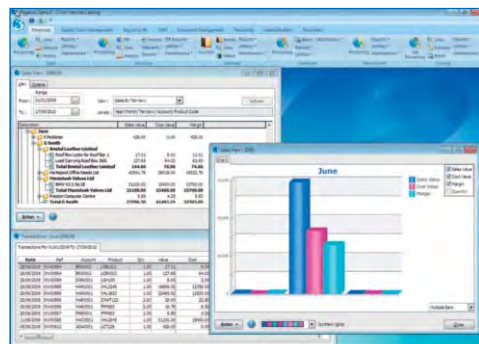
The Retrospective Debtors report allows you to re-run your Debtors report as at a specific date in the past. The data is recreated provided that the date specified on the report is within the Keep Transactions range set in the Sales Ledger Set Options form.

The Retrospective Creditors report allows you to re-run your Creditors report as at a specific date in the past. The data is recreated provided that the date specified on the report is within the Keep Transactions range set in the Purchase Ledger Set Options form.

In both of these reports, all relevant transactions on or before the specified date are included to produce a view of the data as it would have been if the report had been run on that particular date.

Historical Stock Valuation reporting

The Historical Stock Valuation report has been added to Stock Control to show the value of stock items as at a date in the past. You can produce the report by product, warehouse and category sequence. The report includes information about in-stock quantity, cost price, selling price and margin. Options for the report determine whether negative or zero quantity stocks are included. Landed costs and stock items that have been issued for a works order in Bill of Materials can also be included in the report.



Sales View



Open Period Accounting

Flexibility to post in past and future periods

Open Period Accounting is an optional feature that allows you to control whether your Nominal Ledger periods are open, blocked or closed for postings. Accounting periods can be kept open for as long as necessary or can be closed once management accounts have been presented for the financial year.

If Open Period Accounting is used, each transaction that is posted to the Nominal Ledger has a Nominal Ledger posting date, which determines the Nominal period it's posted to. The period that is posted to can be the current Nominal Ledger period, a previous Nominal Ledger period, or a future Nominal Ledger period as long as that period is open. You don't need to change the application's system date because the Nominal Ledger transaction date determines which period is updated. Open Period Accounting works with both the Real Time Update method and the Batch Transfer method of updating the Nominal Ledger.

To utilise Open Period Accounting functionality, you need to select the relevant option in Company Profiles and create the required financial calendars.

Features

- Create financial calendars for the previous, the current and up to three future years.
- Post to the Nominal Ledger without needing to change the application's system date to be in the current Nominal period.
- Post to future and previous Nominal Ledger periods from the Nominal, Sales and Purchase Ledgers, Stock Control, Fixed Assets and Payroll (current and future years).
- Identify periods by a description, period number and year
- Journals posted to the previous, current or future years from the Nominal Ledger can be rectified. You can change the account, cost centre, project or department for each journal line. You can also reverse a complete posting and re-post the journal to any open period in the current, previous or future years. If you don't use Open Period Accounting, you can only modify journals posted to the current financial year.

Financial calendar

Open Period Accounting uses a financial calendar where you define up to 5 financial years with up to a maximum of 24 periods in each year. You can define a financial calendar for the current, previous and three future years. Each year has a description, a standard year-end date and the required number of periods. Each period has a start date, a period description and an indicator that allows you to specify whether the period is open, blocked or closed for postings.

For example, if you start your financial year with 12 periods but need to change it during the year, you can change the number of periods up to a maximum of 24 and can have less than 12. You can change the number of periods for the current and future financial years.

You can control whether users can post transactions to each period in:

- The previous financial year (from the Nominal Ledger only)
- The current financial year
- Up to three future financial years

Periods can be set to 'Open', 'Closed' or 'Blocked' for each of these applications:

- Nominal Ledger (and Cashbook)
- Sales Ledger (and Invoicing/Sales Order Processing)
- Purchase Ledger (and Purchase Order Processing)
- Fixed Assets
- Stock Control (and Bill of Materials)
- Payroll

Purchase Invoice Register (PIR): use PIR transaction date to update Nominal

If using Open Period Accounting with PIR, you can control whether to post using the "PIR transaction date" or the Nominal Ledger posting date to update the current or an earlier Nominal period.

"We were impressed with the greater flexibility and versatility offered by Opera 3 through features such as open period accounting and error correction in journal entries"

Nick Gentry, Finance Director, Tate Bros Ltd

Open Period Accounting reporting

There is an 'NL Posting Period' option which can only be selected if Open Period Accounting is in use. Companies using Open Period Accounting can now simplify the reconciliation process between Sales and Purchase Ledger postings and the associated Control Accounts within the Nominal Ledger.

Sales Ledger Invoices & Credit Notes report

You can view the Sales Ledger Invoices & Credit Notes report based on the Nominal Ledger posting dates rather than the transaction dates. You can specify the Nominal Ledger year, period and posting date for the transactions you wish to view.

Sales Ledger Receipts & Adjustments report

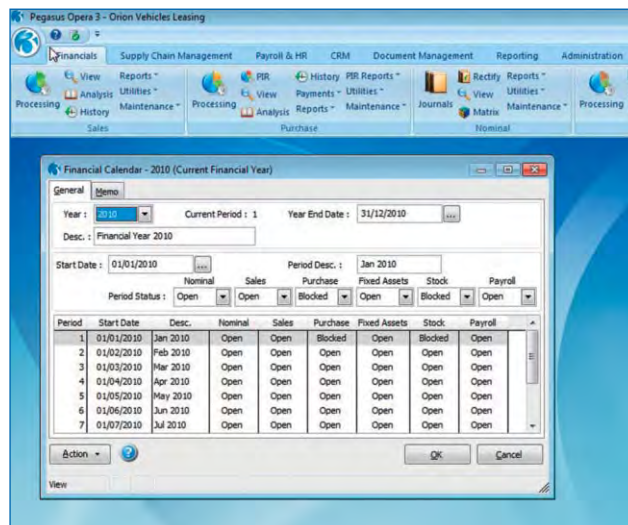
You can view the Sales Ledger Receipts and Adjustments report based on the Nominal Ledger posting dates rather than the transaction dates. You can specify the Nominal Ledger year, period and posting date for the transactions you wish to view.

Purchase Ledger Invoices & Credit Notes report

You can view the Purchase Ledger Invoices & Credit Notes report based on the Nominal Ledger posting dates rather than the transaction dates. You can specify the Nominal Ledger year, period and posting date for the transactions you wish to view.

Purchase Ledger Payments & Adjustments report

You can view the Purchase Ledger Payments & Adjustments report based on the Nominal Ledger posting dates rather than the transaction dates. You can specify the Nominal Ledger year, period and posting date for the transactions you wish to view.



The Financial Calendar

“As well as streamlining our business processes, Opera 3 provides me with the real-time, accurate information I need in order to decide how best to drive the business forward. As such, Opera 3 has become the backbone of our company and is fundamental to how we operate.”

Shirley Harris, Managing Director and Co-founder, LF Harris



Error correction

Simplifying corrections in the ledgers

User-friendly Rectify wizards in Opera 3 provide a rapid process for correcting errors in the ledgers, which would otherwise be complicated and time-consuming.

Rectify Allocation in the Sales Ledger

Correct mistakes that may have been made when allocating receipts to invoices. If receipts have been allocated to the wrong invoices, posted to the wrong account or need to be removed because a cheque bounced, you can use the Rectify Allocation wizard to easily break the allocation link so that you can then re-allocate the receipt to the correct invoice(s); at the same time, you can also remove the associated monetary transaction(s), such as sales receipts.

The Rectified Allocations report provides an audit trail of all rectified allocations, allowing you to reconcile discrepancies in the Sales Ledger Allocations report that may have been caused by rectifying an allocation.

Rectify Allocation in the Purchase Ledger

In the Purchase Ledger, you can correct mistakes that may have been made when allocating payments to invoices; payments may have been allocated to the wrong invoices, posted to the wrong account or need to be removed because a cheque bounced. With the Rectify Allocation wizard you can easily break the allocation link and re-allocate the payment to the correct invoice(s), and you can also remove the associated monetary transaction(s) such as a purchase payment at the same time.

Rectify journals in the Nominal Ledger

The Nominal Ledger Rectify feature is used to amend and re-post journals after they have been posted. For example, you may have posted a line, or the complete journal, to the wrong date or account. The Rectify feature will allow you to reverse such errors and re-post the journal.

When an individual journal line is rectified, two new journal lines are posted using the same date and period as the original journal line. The first new journal line reverses the details on the original journal line using the same account, project and department. The second new journal line is posted using the new account, project and department. The original journal line is not changed; it remains on file so that a complete audit trail of journal details is retained.

When an entire journal is rectified, a new journal is posted to the same period using reversed values. If you choose to post the journal again, the entire journal is posted again to a different period using the original account, project, department and values. The original journal is not removed; it remains on file for a complete audit trail.

Foreign Currency journals: Re-post with Modified Exchange Rate

When rectifying Foreign Currency journals, you can re-post them at a different exchange rate. The 'Rectify the Complete Journal' form has a new 'Re-Post with Modified Exchange Rate' option, which includes additional fields: Original Exchange Rate and New Exchange rate.

Re-post using the latest allocation percentages for Distribution Accounts

You can re-post a journal using the latest allocation percentages for Distribution Accounts. The Rectify the Complete Journal form includes a new 'Re-post using the latest allocation percentages for Distribution Accounts' option, for journals posted to Distribution Accounts.

Error correction functionality comes as standard with Opera 3.

"By providing access to the goldmine of information held on our systems, Opera 3 is helping our teams work more effectively. We are now better placed to manage debtors, suppliers and stock control levels, and can update customers on their orders more accurately, empowering us to make more sound decisions to drive the business forward."

Guy Atkins, Managing Director, Jo Bird



Credit Management Centre

Manage customer debt effectively to help improve cashflow

The Credit Management Centre offers a centralised, easy-to-use tool which consolidates all of the information needed for effective credit control. With easy-to-understand, real-time graphs displaying your overall financial status, you can quickly see what is owed, who owes it and how much money has been promised by customers.

Information is displayed at different levels, giving you a well-rounded view:

- Overall financial position of your company
- Details of individual customers
- Actual transactions
- Diary, so you can view actions that have been recorded

You can perform all the tasks necessary for effective credit control management including:

- Filter customers/debtors according to your requirements: show only overdue accounts, only those over the credit limit, those in a selected Credit Management Group, only overdue invoices above a chosen value and so on.
- View all disputed invoices and outstanding actions.
- View financial ratios such as average debtor days, average creditor days, debtor analysis and promised payments.
- View customer contact details and financial status details
- Change a customer's credit limit, put them on Stop or take them off Stop, either individually or in bulk.
- Record a customer's credit rating or credit score.
- Mark invoices as disputed or not disputed.
- Print advanced debtors letters, customer statements and copy invoices.
- Add diary actions as reminders to contact customers and chase debt. Diary actions can also be edited.
- Record any promised payments against the account or individual transactions.

Debt Management: get paid faster

The Debt Management facility allows you to create up to nine levels of customised debt correspondence per company or per individual customer. You can then email or print them, either individually or in bulk.

Using the Scheduler Service, the generation of debt correspondence is handled by the server in the background, minimising disruption to your work in Opera 3.

Credit Management reporting

Diary Actions report: lists the diary actions that have been recorded, and can be exported to Excel. You can select to include actions for today only, from the last seven days, from the last thirty days or for a range of dates. You can also include completed actions, notes added for actions and only actions that have been marked for follow-up.

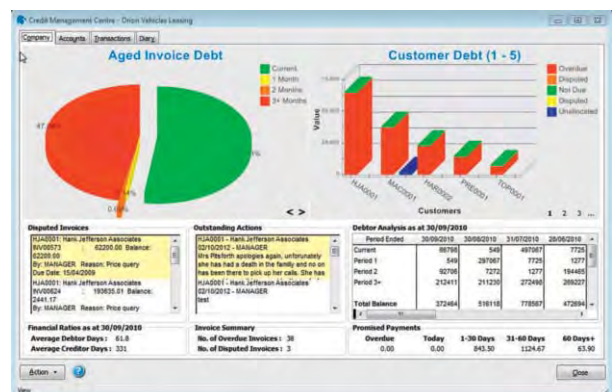
Promised Payments report: lists the values of payments that your customers have promised, and can be exported to Excel. Promised payments and dates are recorded on diary actions. You can sequence the report by: account (grouped by the user or the value), user (grouped by the customer account or the value), value, balance and promised date.

Action Types report: an analysis of the Diary Actions that have been entered. Separate totals are displayed for each action, outstanding actions, overdue actions and completed actions.

Credit Management Groups report: displays the total outstanding debt for each group.

Outcome Types report: lists an analysis of the Outcome Types for diary actions that have been entered. Separate totals are displayed for all Outcome Types, outstanding actions, overdue actions and completed actions grouped by Outcome Type.

Unallocated Items report to help you with housekeeping, so you can identify unallocated transactions prior to processing the Correspondence run in Debt Management.



Company View



Email payslips and P60s

See the savings add up

The cost of printing and posting payslips and the admin time involved can be a considerable overhead for every business, regardless of size, and especially for those that run different payroll frequencies.

Opera 3 Payroll offers the option to email payslips and P60s to employees and can make paper payslips and P60s a thing of the past. You'll no longer need to procure the relevant stationery, dedicate admin time or incur postage costs; at the click of a button, payslips and P60s can be delivered to the employee's inbox as a password-protected PDF document.

Emailing payslips to employees will make your payroll run much more cost-effective, efficient and environmentally friendly. If, however, printed payslips and P60s are required, these can also be produced in the usual way. And with flexibility at the forefront, Opera 3 also allows you to use a combination of both printed and emailed payslips and P60s.

Payslip and P60 PDFs are password-protected, initially with passwords automatically assigned to employees by Opera 3. If employees wish to change their password, they can do so by advising the payroll administrator. When a password is added or changed, it's only ever visible when it's being entered into the system; after this, it's encrypted and displayed as asterisks. To help ensure greater security, Opera 3 won't allow the duplication of email addresses across different employees.

Setting up employees to receive payslips and P60s by email is quick and easy. Using Quick Email Setup, you can either import or enter employee email information quickly to update payroll records. The email editor will then allow you to design the email templates to use for the distribution of passwords, payslips and P60s. Opera 3 gives you the option to design different templates for use with different payroll groups. When you've completed these simple steps, employees are set up to receive payslips by email.

Opera 3 also allows the flexibility of marking individual employees to receive email payslips and P60s.

Emailing payslips will make your payroll run as easy as pressing a button: Opera 3 generates PDFs of the payslips or P60s for the employees you select and the server handles sending the emails in the background, so you can continue to process without disruption.

The Check Email Status report will display the current status of all the email batches you have generated.

As well as payslips or P60s, you can also attach up to three other PDF documents to your emails for quick and easy distribution to employees, such as company policies or an HR newsletter.

Features

- Up to three additional PDF attachments can be added to the emails.
- Up to two email addresses per employee can be stored, either or both of which can be used for emailing payslips/P60s and passwords.
- HMRC-approved electronic P60 designs.
- Payslips and P60s can be previewed before being sent.
- Email template designs for Welcome, Password, Payslip and P60 emails.
- Global email detail update routine.
- Employees can either accept the default password assigned to them or request for it to be changed.
- Employee passwords can be edited individually.
- The Quick Email Setup List is a new report that displays all employees, detailing those who receive their payslips and P60s by email together with their email addresses and what each email address is used for.
- Previously emailed payslips/P60s can be viewed in Employee History in a meaningful format which now includes all the payslip/P60 headings.

Email payslips functionality is included as standard with Opera 3 Payroll.



“The salary sacrifice capabilities in Opera 3 Payroll & HR mean that instead of manually entering data into a spreadsheet every month, the process is completely automated and calculates everything for us, saving even more time. It truly is a win-win.”

Jakki Hill, Payroll Manager, Houlder

Salary sacrifice

Lessen the impact of pension contributions

What is salary sacrifice?

With the advent of auto enrolment, salary sacrifice is becoming more and more popular with companies deciding to use it with their pension schemes. Under a salary sacrifice arrangement, an employee gives up some of their cash earnings in return for new or increased entitlements to non-cash benefits provided by their employer. Some examples of salary sacrifice schemes include pension contributions, childcare vouchers, Cycle to Work schemes, travel and subsistence allowances.

Salary sacrifice can be financially beneficial for both employers and employees as it can reduce the amount of tax and/or National Insurance (NI) payments due. This happens when part of an employee's remuneration changes from cash, for which tax and NI contributions are due, to non-cash benefits which are wholly or partially exempt from tax and/or NI contributions.

Salary sacrifice and Opera 3 Payroll

Opera 3 Payroll can automatically calculate both percentage-based and value-based salary sacrifices, and can cater for both pension-related and non-pension salary sacrifice schemes, providing traceability and analysis throughout the entire process.

How it works

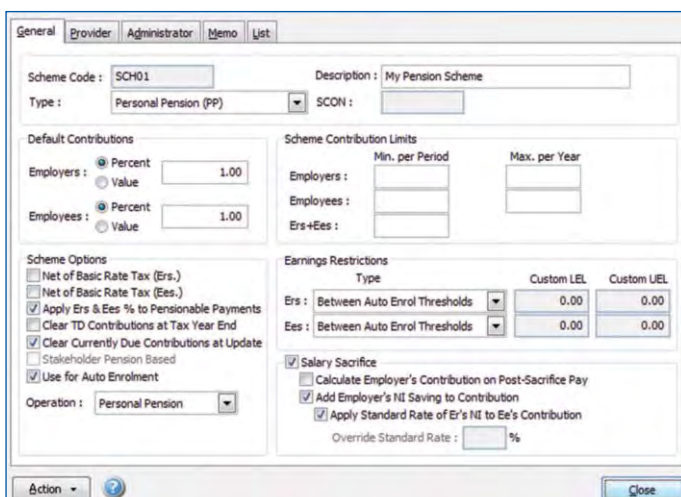
In Opera 3 Payroll, salary sacrifice is processed using a “negative payment”. A Payment Profile is created for each type of salary sacrifice required and is then added to the participating employee's record. When the Payroll Calculation is run, the sacrificed amount, either as a percentage or as a value, will be assigned to that salary sacrifice Payment Profile as a “negative payment”. This reduces the gross pay by the value of the sacrificed amount.

For a pension-related salary sacrifice scheme, the pension scheme is linked to the salary sacrifice Payment Profile, which is then attached to the employee's record. Pension-related salary sacrifices are included within the associated pension contribution files and reports.

For additional flexibility when it comes to pension contributions, the employer can choose to add their NI saving as a ‘top-up’ to the employee's pension, and can specify whether the whole saving or a portion of the saving will be added.

For non-pension salary sacrifice schemes, the Payment Profile is attached to the employee and a value is added to it, such as the amount for Childcare Vouchers or Cycle to Work schemes.

The salary sacrifice feature is available as standard with Opera 3 Payroll.



The screenshot shows the 'General' tab of a configuration window for a pension scheme. Key settings include:

- Scheme Code:** SCH01
- Description:** My Pension Scheme
- Type:** Personal Pension (PP)
- Default Contributions:** Employers and Employees both set to 1.00 (Percent).
- Scheme Contribution Limits:** Fields for Min. per Period and Max. per Year for Employers and Employees.
- Scheme Options:**
 - Net of Basic Rate Tax (Ers.)
 - Net of Basic Rate Tax (Ees.)
 - Apply Ers & Ees % to Pensionable Payments
 - Clear TD Contributions at Tax Year End
 - Clear Currently Due Contributions at Update
 - Stakeholder Pension Based
 - Use for Auto Enrolment
- Earnings Restrictions:**

Type	Custom LEL	Custom UEL
Ers: Between Auto Enrol Thresholds	0.00	0.00
Ees: Between Auto Enrol Thresholds	0.00	0.00
- Salary Sacrifice:**
 - Calculate Employer's Contribution on Post-Sacrifice Pay
 - Add Employer's NI Saving to Contribution
 - Apply Standard Rate of Er's NI to Ee's Contribution
 - Override Standard Rate: %

Pension-related salary sacrifice



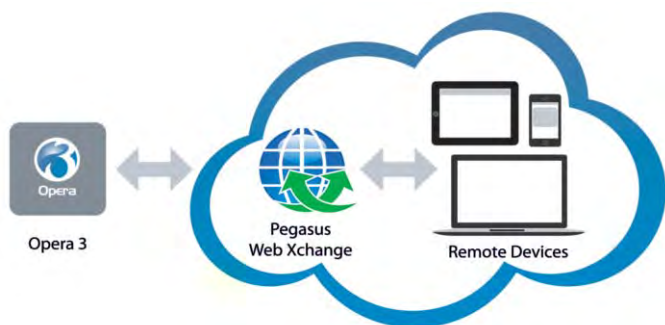
“Pegasus Web Xchange is the future of how businesses will integrate their accounting and business systems with the web and leverage the benefits of both environments.”

Stuart Anderson, Sales & Marketing Director, Pegasus Software

Pegasus Web Xchange

Connect with your Opera 3 data remotely

Pegasus Web Xchange is a secure and easy way to access your Opera 3 data on the go: any time, anywhere. It will change the way you work and run your business.



Pegasus Web Xchange provides a set of services that are used to securely access and view Opera 3 data via a mobile app or web browser. Users can sign in from a range of mobile devices* through Pegasus apps or supported web browsers such as Internet Explorer, Google Chrome, Mozilla Firefox and Safari for iOS.

- Connect with Opera 3 data wherever you are, on devices such as PCs and tablets
- Access your data securely
- 24/7 access
- Improve efficiency
- Empower employees
- Save time

Services available on Pegasus Web Xchange:

- Payroll Self-Service
- Mobile Sales
- Timesheets

* Speak to your Pegasus Partner

Pegasus Web Xchange functionality

- The website administrator can send an email to single or multiple recipients, schedule the email to be sent at a given date and time, and resend all or failed emails.
- Create email profiles to be used as templates for emails
- Service Status View: a diagnostics portal so that the website administrator can monitor the status of all services between Opera 3 and Pegasus Web Xchange.
- New Import History report: a historical audit trail of Pegasus Web Xchange requests that have been accepted or rejected via the Import Requests function.
- Synchronisation facilities for the current company.
- When creating Pegasus Web Xchange users and selecting the associated employee, the administrator can filter users by reference, surname, company or department.
- When creating Pegasus Web Xchange users and assigning them a Payroll Self Service department, the Payroll Self Service administrator can filter departments by company or department name.

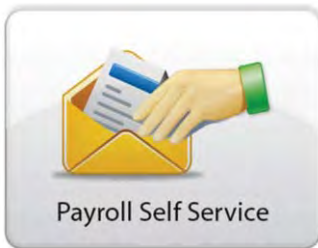
Pegasus Web Xchange is a chargeable application.



Secure mobile access

“The cost savings and service improvements associated with Payroll Self Service meant that the decision to deploy the solution was a no brainer. We calculated savings of over £1200 each year through eliminating printing and postage from the distribution of payslips, as well as being able to provide a faster, more efficient service to our widespread employees.”

Sandra Lay, Finance Manager, Swift Clean



Payroll Self Service via Pegasus Web Xchange

Empower employees and reduce HR costs

Payroll Self Service offers improved efficiency throughout the HR department; its noticeable cost and time-saving benefits make it the perfect solution for many organisations.

Printing payslips and P60s and keeping up with employee requests to update personal details, check holiday entitlement or re-issue copies of payslips can add hours to a Payroll Administrator’s workload. With Payroll Self Service, the time spent doing administration every month can be significantly reduced, and you’ll also make substantial savings on the cost of printing and posting payslips and P60s.

Security for peace of mind

Depending on the permissions assigned to them, employees may access information such as their personal details, pension information, photograph, contacts, education records, bank account information, absence details and holiday entitlement. This information can be restricted to Read Only, or Read/Write access can be given so that the employee can update various details and post them back to Opera 3 for authorisation by the manager. Integration with Notification Services in Opera 3 will alert the manager of changes awaiting authorisation, which the manager can then approve or reject.

Employees can view current and previous payslips and P60s online and print as required, eliminating postage and print costs and saving time. Printed payslips and P60s can still be produced for employees that don’t use Payroll Self Service.

Employees who are members of a pension scheme can also instantly access their pension information. They have visibility of their current pension provider and both employer and employee contribution percentages and values. They can also drill down to a detailed view of their overall pension contributions.

Payroll Self Service is a chargeable application.

Payroll Self Service highlights

- Employees have secure electronic access to their payslips and P60 certificates at any time.
- Payslips and P60s can be made available online or printed.
- HMRC-approved eP60 report.
- Employees have access to their pension information.
- The administrator can create and use email profiles and can send emails to individual or multiple users, or schedule emails to be sent at a certain date and time
- Employee permissions can be set to No Access, Read Only or Read/Write.
- Default permissions can be assigned to Roles which in turn can be linked to employees. This allows for global assignment of permissions.
- Subject to permissions, employees can remotely access and amend their personal details, photograph, contacts and education records. They can also access their pension information, bank account information, absence details and holiday entitlement.
- Authorisation routine allows a manager to approve pending updates to employee details.
- Integration with Opera 3 Notification Services alerts a manager to requests awaiting authorisation.
- Batch creation of users for rapid deployment.
- Automatic generation and distribution of user passwords upon initial setup, which can easily be reset.
- Payroll Self Service accounts are linked back to employee records within Opera 3.
- Managers can be assigned the Departments that they are responsible for.
- Full Audit Log of changes requested.
- The look and feel of Pegasus Web Xchange can be customised with your company logo.
- SSL certificates can be used for secure access.



View P60s online



Mobile Sales via Pegasus Web Xchange

Connecting your sales team on the road with your office

Mobile Sales via Pegasus Web Xchange is a dedicated sales app that will change the way your orders are taken and processed.

If you have a sales team on the road, Pegasus Mobile Sales will be an invaluable tool for them to take sales orders on their tablets. The sales person can showcase products to the customer, take the order and send it securely back to the office to be authorised and uploaded into Opera 3 Sales Order Processing.

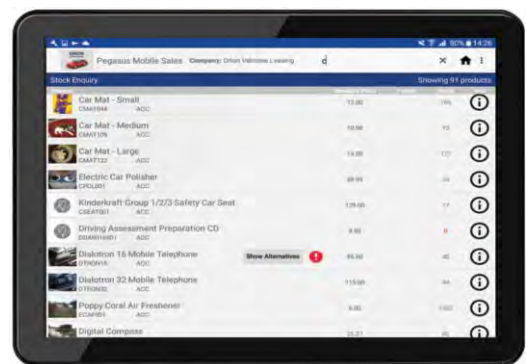
With Pegasus Mobile Sales, the turnaround time between a customer placing an order and that order being processed is reduced significantly. This improves delivery and invoicing times, ultimately enhancing cashflow. Processing orders in this way saves time and money and improves the customer's experience of your company.

Pegasus Mobile Sales is designed to improve the way your sales team interacts with customers. Account information is provided so that the sales person can see the customer's credit limit and current balance, a list of their outstanding invoices and due dates, and previous orders placed. The sales person therefore knows what's been ordered, delivered and invoiced to that customer, so they have a history of the customer's purchasing patterns. And it's possible to define the length of time sales orders are retained on the tablet.

In addition, Stock Enquiry allows the sales person to see what is in stock and the selling price to that customer. All of which is exactly what the sales team needs to manage customer accounts, take sales orders and send them to the office for processing.

Pegasus Mobile Sales is designed to work even if there's no internet connection, using cached data. Information on orders placed is stored on the tablet until a network connection is found.

Mobile Sales is a chargeable application.

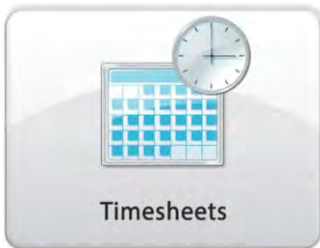


Pegasus Mobile Sales app

Features and benefits

- Works on Android tablets*
- Secure communication between the tablet and Opera 3
- Showcase products to customers: the app downloads Opera 3 Stock Control to the tablet, including stock levels and pricing
- Sales orders from the tablet are uploaded to Opera 3, where the sales office can approve them and import them into Sales Order Processing
- If an order is rejected, the sales person is notified and given the reason
- The sales person can either select all the customers they have access to, or an individual customer
- Uses product and special pricing, invoice and settlement discounts and customer price lists
- The Due Date for delivery can be specified at both Sales Order and Sales Order Lines level
- The customer's signature can be captured on orders and included in the order confirmation email
- The sales person can view the status of the order, from upload to Opera 3 through to Delivered and Invoiced
- Orders can be taken even if there's no network service, and can be uploaded once network service is restored
- Ideal solution for companies with sales people on the road
- Saves a company both time and money

* Will be available on iPad in 2017.



Timesheets via Pegasus Web Xchange

Easily track time and ease the burden on the payroll team

With Opera 3 and Pegasus Web Xchange, completing and submitting timesheets, whether remotely or in the office, is now at your employees' fingertips.

Integrating with Opera 3 Payroll & HR, Timesheets via Pegasus Web Xchange allows employees to enter their timesheets from any location that has internet access, using their device of choice. Office-based staff can equally use this simple and highly accessible timesheet recording system to manage their time and activities efficiently.

With a timesheet entry facility that's integral to Opera 3, there's no more need for the payroll team to import numerous timesheets in spreadsheet format every time they perform a payroll run. Consequently, admin time and the possibility of error are significantly reduced.

Employees don't need to be users of Opera 3 to use Timesheets. They simply log into the Timesheets service, complete their details and submit. The timesheets are then forwarded to their manager, who can approve or reject them. The manager can add notes to rejected timesheets, and these are then returned to the employee for amendment and re-submission for review by the Payroll Administrator. Once approved, timesheets can be imported to Opera 3 Payroll for inclusion in the next payroll run. If further information is required by the Payroll team, they can drill down to the entries underlying the timesheet.

For added flexibility, any employee can be defined as "No Payroll Update", which means that they can enter timesheets but these will not be transferred to Opera 3 Payroll. This is useful if the employee is salaried and does not get paid based on hours worked, or is a contracted employee.

How it works

Managers set up tasks and employees record their hours worked against any of these tasks. Tasks can be project-related, or non-project related such as holiday or sickness, providing a complete time record for each employee.

Timesheets can also cater for time entry against a shift that might include overtime or unsociable hours payments; these can be reported on and can be posted to Opera 3 Payroll.

Employees can partially complete their timesheets and save them for completion later, ideal for recording daily times and submitting them to their manager at the end of the week.

And for workers who have similar work patterns every week, the timesheet can be pre-populated with their usual activities for additional speed and convenience.

Timesheets also offers reporting and analysis functionality. Time recorded by employees can be analysed by project, task type, date and worker. All this information can also be exported to Excel for further analysis.

Key features

- Integration with Opera 3 Payroll
- Employees have secure access to enter and review timesheets remotely using PCs, laptops, tablets and smartphones
- Employees don't need to be users of Opera 3 to use the Timesheets service
- Create Projects and Tasks against which time can be posted
- Non-project time, such as holidays, can also be posted
- Partially complete timesheets can be saved and amended later
- Time can be posted against overtime and unsociable hours in order for the correct payments to be calculated
- Timesheets can be pre-populated with the employee's usual activities
- Handles timesheets for subcontractors that are not paid via the payroll
- Awaiting Approval timesheet list for Managers
- Timesheet Managers, as well as Payroll Administrators, can approve or reject timesheets
- Rejected timesheets can be amended by the employee and re-submitted
- Bulk emailing to employees

Timesheets is a chargeable application.



Landed costs

For an accurate valuation of your stock costs

Landed costs are the additional costs incurred in getting goods you purchase from your suppliers to your premises. Knowing your landed costs helps improve costing and accountability when purchasing stock, particularly from overseas suppliers.

The total cost of a landed shipment includes the purchase price of the goods as well as freight costs, insurance, warehousing and, in some instances, customs duties and other taxes that may be levied on a shipment. These costs can be posted to the Nominal Ledger to ensure more accurate Profit & Loss and Balance Sheet reporting. Landed costs are also included on the various stock-related processes such as the Stock Valuation Report, to provide a more accurate picture of the value of your stock. Knowing both the purchase price and the landed costs is critical, because the total cost needs to be linked to the sales price so that you know what your profit margin will be.

Landed costs are optional; if you wish to use landed costs, the option can be activated within Company Profiles in Opera 3. This option is only enabled if you use both the Stock Control and Purchase Order Processing applications.

Landed Cost Types

Landed Cost Types are key to the operation of landed costs; they define the individual landed cost elements that can be assigned to stock records, which are used to build up the total landed costs for that item. These codes provide a flexible way of defining the values of your landed costs. The default value can be left empty, so that the value of the landed cost can be entered when stock is received, providing even more flexibility in assigning landed cost values. You can also specify a Nominal Account Code. You only need to do this if the Nominal Account Code on the Landed Cost Groups or in the Nominal Ledger Set Options is not correct for this type of landed cost, providing flexibility in the way these costs are analysed in the Nominal Ledger.

Landed Cost Groups

Landed Cost Groups are optional but it does make it easier to operate landed costs if groups are used. Landed Cost Groups allow you to group together different Landed Cost Types for data selection and reporting. For example, you might have a number of Landed Cost Types for different types of freight, such as road/rail/sea/air. You could link these Landed Cost Types into one group called "Freight", so you can report on these landed costs either individually or under the Freight group. It is also possible to assign a Nominal Account Code to a Landed Cost Group. Landed Cost Types inherit the Nominal Account from the Landed Cost Group. This means that you don't need to assign this Nominal Account Code individually to each Landed Cost Type, so creating these items is faster and you are less likely to make mistakes.

Landed costs functionality comes as standard with Opera 3.

A screenshot of a software window titled 'Landed Cost Types : LEVY - Standard Levy'. The window has three tabs: 'General', 'Memo', and 'List', with 'General' selected. The 'Code' field contains 'LEVY'. The 'Description' field contains 'Standard Levy'. The 'Group' field contains 'LEVY' and 'Standard Levy'. Under 'Calculation Method', there are three radio buttons: 'Fixed Value per Unit Item' (selected), '% of Line Cost Value', and 'Aggregated Cost (%)'. A 'Value' field next to the second radio button contains '2.75'. The 'Nominal Account' section has an 'LC In' field containing 'M320' and 'Standard Levy'. At the bottom right, there is a 'Close' button. The window title bar shows standard Windows window controls.

Landed Cost Types

"Opera 3 has given us the ability to take full control of all aspects of our company, helping us move forward and grow at the same time."

Joey Barfe, Operations Director, Ibonhart

Landed costs reporting

Landed Costs report

This report displays the landed costs recorded when stock receipts were posted. You can sequence the report in different ways including by Landed Cost Type and Landed Cost Group. This report can be used to help with the reconciliation of expected landed costs with actual landed costs charged. After establishing the variances between expected and actual costs, you can work out any loss or gain and post a journal to the Nominal Ledger as necessary. You can also use this report to monitor the recorded landed cost values or percentages on the Landed Cost Types you have set up and make amendments if necessary.

Landed Costs Settings report

The Landed Costs Settings report displays information about stock items with Landed Cost Types assigned to them. It displays the Landed Costs Types for each stock item, their default value, calculation method and whether it is included in the aggregated cost calculation. The Landed Costs Types are grouped by Landed Costs Group if they are used.

Stock Valuation and Historical Stock Valuation reports

These reports can include both the landed costs and purchase price in the cost price figures. They also display the sale price and the calculated profit margin. Since the cost price can include landed costs, this report gives a much more accurate calculation of your potential profit margins if the goods were sold at their specified sale price. These reports can also be run excluding landed costs if required.

Issues report

The Issues report can include both the landed costs and purchase price in the cost price figure. It also displays the actual sale price, actual profit value and profit margin on the sale, reflecting your profit more accurately. This report can also be run excluding landed costs if required.

Record Sheets and GRN reports

These include both the landed costs and purchase price, helping you identify stock items that are subject to landed costs. The GRN Report also includes the Shipping Reference entered when the goods were received.

Landed Costs Prices

The landed cost value for a stock item (either standard or average, based on the stock profile in use) and the last receipt cost are displayed on the Stock Processing form. They are also displayed on the Warehouse form if warehouse prices are in use. This allows you to immediately see the expected landed costs and the landed cost price from the last receipt into stock. The unit cost for the stock item is also displayed, giving you all the costing information you need for a stock item. These figures are used in a number of areas such as stock receipts in Stock Control and Purchase Order Processing, and on sales and orders and invoices in SOP/Invoicing. This gives you a more accurate view of costs and margins when using these stock items because it includes both the unit prices and the landed cost prices to give a true total cost.





Stocktake

Keeping accurate stock levels

Stocktake improves accountability and stock management, helping you maintain accurate stock levels. By identifying any stock movements not accounted for by normal processing, Stocktake helps to pinpoint rates of loss and cost implications.

With Stocktake, product information can be extracted from Opera 3 Stock Control, divided and allocated to worksheets so that the relevant personnel can perform manual counts. On completion, management can run a cross-check, make corrections and post adjustments back into Opera 3 to automatically update stock levels.

Stocktake Profiles

Stocktake Profiles allow you to define how stock items are processed when using Stocktake. You can specify how often a stocktake should be performed on certain items and how many times stock items are counted. You can also specify tolerance percentages, which are used when the actual quantities found during a stocktake are different to the quantities on the system; stock counts outside the acceptable limit are then flagged up for attention and cannot be posted until the issue is resolved.

A default Stocktake Profile is automatically allocated to all current Stock Profiles when Update Data Structures is performed. You can either utilise this or delete it and add one or more new profiles. If you create more than one Stocktake Profile, you need to link them to your Stock Profiles or to your warehouses for each item as necessary.

"The new functionality in Opera 3 means that we can perform our month-end much faster, and because stock management is integrated with our accounting processes, we have 100% visibility of inventory, production and delivery schedules."

Paul Birnie, Financial Director, Wensleydale Dairies

Moving stock that is currently in a stocktake

A stock item can be issued to customers or receipted into stock whilst being counted via Stocktake. This means that other areas of the business can continue to use the Stock Control application and the count currently in progress is not affected. Stocktake users are given the 'Adjusted' value, which is calculated automatically by the system, and have the flexibility to choose which quantity should be posted back into Opera 3.

Selecting items for a stocktake

You can select the items to include in a stocktake based on the warehouse and bin number they are located in, by stock category, or from a range of stock references. You also have the option to include only items that are due to be counted (ie items that are supposed to be counted at regular intervals) or items that are overdue for a count.

Filtering items by bin location

If you are using bin locations, you can split up and plan your stocktakes based on bin locations, allowing for logical counts to be undertaken more effectively.

Controlling adjustment costs

This gives you the flexibility to choose between Last Cost price, Standard or Average Cost to calculate adjustment costs from Stocktake to Opera 3. Being able to choose the item's Last Cost price enables more accurate reporting and analysis.

Warehouse	Category	Stock Ref.	Description	Bin	Type	Due?
<input type="checkbox"/>	MAIN	ACC	ZACD010	Sony Stereo WX-C600R		Due (never counted)
<input type="checkbox"/>	MAIN	ACC	ZACD007	Sony Stereo WX-C570R		Due (never counted)
<input type="checkbox"/>	MAIN	ACC	ZACD006	Clarion DIX2LS Pro Audio CD Player		Due (never counted)
<input type="checkbox"/>	MAIN	ACC	ZACD005	Sony Stereo WX-C500		Due (never counted)
<input type="checkbox"/>	MAIN	ACC	WRN01	Warning Triangle		Due (never counted)
<input type="checkbox"/>	MAIN	ACC	WMBC001	Jump-Starter Pro	Serial Item	Due (never counted)
<input type="checkbox"/>	MAIN	ACC	TTWT001	Warning Triangle		Due (never counted)

The Create Stocktake form

"Previously we would have extracted the data manually from Opera 3 and input the data onto the HMRC website. VAT 100 now allows us to carry out the procedure online and cuts out any potential errors that may arise in the transferring of data."

Mark Hatchley, Finance Manager, Seawhite of Brighton



VAT100 Online Filing

File your VAT return online from Opera 3

HMRC has phased out paper VAT returns. Most companies have to submit their VAT returns online and pay any VAT due electronically.

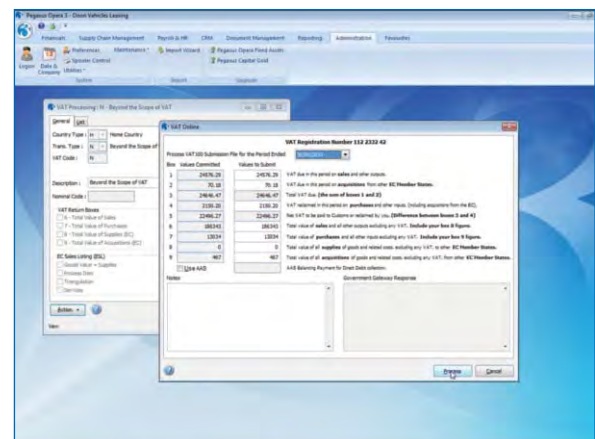
Opera 3 works with the Online Filing Manager so that you can file your VAT return online using the Government Gateway, the internet portal where businesses can access the online services provided by a range of Government departments. Opera 3 and the Online Filing Manager comply with HMRC requirements for filing online.

Transaction values linked to VAT codes that are marked to be included on the VAT100 return are also included on the VAT Online form, which is accessed from the VAT Processing form in the System Manager. The form displays the values for each box on the VAT100 return, calculated by Opera 3 from the sales and supply transactions posted in the application. You can amend the calculated values if required. After a successful submission has been made to the Government Gateway, the boxes are disabled so you won't be able to change the values. If a submission is failed by the Government Gateway, you can amend the boxes before submitting the VAT return again.

A note is displayed in the Government Gateway Response box which confirms whether the submission was successful or not.

There are lots of benefits to submitting your VAT Return online:

- **Speed:** going through the online registration and enrolment process takes just a few minutes
- **Security:** all transmissions are secure because they are encrypted to the highest commercial standards and you have a unique User ID and password
- **Convenience:** the service is available all the time
- **Accuracy:** there are checks to help reduce errors so there is less chance of having your return sent back to you for correction or clarification
- **Reliability:** you get an acknowledgment from HMRC including a unique submission receipt reference number



Opera 3 VAT 100 online filing



Scheduler and Notification Services

Running key tasks outside office hours

Scheduler

Some system tasks require exclusive access to your data, meaning that before they can be run all users must log out of Opera 3. Running such tasks during working hours is disruptive to day-to-day processing and ends up costing you time and money. With the Scheduler in Opera 3, they can be scheduled to run outside the normal working day so that your staff can go about their business without interruption.

You can schedule tasks for the following processes:

- Backing up Opera 3 data
- Running the Period End in the Nominal, Sales or Purchase Ledgers
- Rebuilding the periods in the Nominal Ledger
- Rebuilding the transaction history in the Nominal Ledger
- Invoicing/SOP re-organisation
- POP re-organisation
- Stock Period End
- Posting repeat invoices
- Running Update Data Structures to update your data
- Tidying system files to clear temporary files and event logs, remove report layout, user and company profile records that have been marked for deletion, and tidy VAT files and exchange rates

Chain Task

You can chain tasks together to run in sequence. For example, you may want to create a chain that runs the Data Backup, Update Data Structures and Nominal Ledger Period End Tasks, one after the other. Most of the Scheduler tasks can be included in chains.

Scheduler Service

The Scheduler Service allows the generation of Debt Management correspondence to be handled by the server instead of individual client PCs. This offers significant improvement in productivity and efficiency by allowing users to continue their work in Opera 3 while processing is done in the background.

The Scheduler and Notification Services come as standard with Opera 3.

Notification Services

The Scheduler uses Opera 3 Notification Services, which offer the options of forcing a shutdown, performing a lockout or sending a message to users logged into Opera 3.

Shutdown

The Shutdown facility can help you manage a busy multi-user environment by allowing processes that require exclusive access to the system to take place even if users have not logged out. When you schedule a shutdown in the Scheduling menu, an automatic shutdown will be enforced on all Opera 3 sessions. You can arrange for users to receive up to three warning messages before the shutdown is executed, ensuring they are aware that a shutdown is scheduled.

You can also set a lockout period, to ensure that the process will be completed before users can log back in.

Lockout Only

The 'Lockout Only' option denies access to new users whilst allowing existing users to remain logged in. For example, if a member of the finance team needs to perform a Nominal Ledger Period End, or the Payroll administrator needs to perform an update, they can remain logged into Opera 3 to run these processes, while other members of the finance or payroll teams are locked out until the processes are complete. Other teams, such as the sales team, are completely unaffected by the lockout and can continue to process normally.

Messaging

Keep employees informed of planned activities, such as a system backup. Messages can be sent to users/groups of users via the Opera 3 interface. The sender can define the title, date, time and sending frequency for each message.

Integration between the Scheduler and Notification Services allows you to schedule a message, shutdown or lockout at the same time as creating a Task in the Scheduler. This significantly reduces the time it would take to set them up individually.

Notification Services also offers integration with CRM. Notifications can be sent to users when an activity is created, modified, cleared, deleted, or as a reminder when it's about to become due, as well as when a sales opportunity is created or modified, or as a reminder when it has reached the "Next Chase Date".



"Opera 3 really is the backbone of our business. And by deploying Opera 3 in the cloud we are set to derive additional benefits in terms of cost savings, responsiveness and scalability."

Mike Stapley, Director, GRA Ltd (Greyhound Racing Association)

Pegasus Business Cloud®

Flexible, mobile and cost-effective

Pegasus Business Cloud is a flexible, secure and reliable alternative to implementing Opera 3 on your premises.

Opera 3 is a complete business solution ideal for any small to mid-size business, and purchasing it to own outright is the right decision for many companies. For others, low cost of ownership and the agility offered by mobile computing are just as important. This is why Pegasus now offers you the choice of deploying Opera 3 in the cloud.

Pegasus Business Cloud combines the rich functionality of Opera 3 with the flexibility of mobile computing so that users have access to systems, information and processes no matter where they are or which device they have handy. Whether in the office or on the go, on a laptop or on a tablet, they'll have fast, portable and instant access to Opera 3, allowing them to monitor suppliers, customers, accounts and all the processes that Opera 3 provides. And all for a single monthly cost.

When you sign up for Opera 3 in the cloud, Pegasus creates a hosted virtual server for your use. This server includes Windows Server/SQL Server and 65GB of space, which leaves about 20GB of free space. You also get 5GB RAM. Onto this server is installed an image that contains the operating system, the Opera 3 system and a pre-licensed copy of Microsoft Office 2016. All you need to do to access Pegasus Business Cloud is to download the Citrix Receiver client to the device being used.

Once installation and activations are complete, users log into the Pegasus Business Cloud service and use Opera 3 as if it were installed on your premises. This means that it can be accessed from any location that has internet access. Opera 3 on Pegasus Business Cloud works well on desktop and laptop computers and tablets, but because of the screen size on smartphones, these devices are not ideal.

If you decide that Opera 3 in the cloud is the best way forward for your needs, the things to consider when making your decision are the number of Opera 3 users and applications, the number of MS Office users, the internet speed you have available and how much additional disk space or RAM you may require.

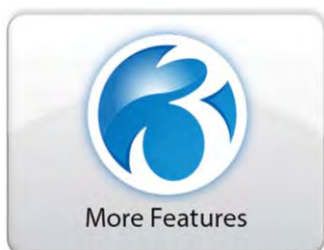
Pegasus Business Cloud benefits

- 24/7 remote access
- No upfront software licencing costs
- No recurring annual maintenance costs
- Improved cashflow because there's no up-front capital expenditure, just a monthly operational payment
- No investment in server and network hardware infrastructure
- No requirement for dedicated IT staff
- Server backup and security are taken care of for you
- Anti-virus and spam filters are always up-to-date
- Adding more users and applications is quick and easy



"Getting Opera 3 was a good business decision and I'm really looking forward to seeing how we can utilise it to benefit other areas of the business."

Chris Barfe, Managing Director, Ibonhart



More features to improve your business

Since the first release of Opera 3, we've added many more exciting new features to provide you with software that works hardest for your business. When using Opera 3, you'll also benefit from all these:

New report engine

In Opera 3 you can run multiple reports at the same time and reports can remain open whilst you navigate to other screens. The new search facility creates a list of bookmarks that link to the relevant results of your search so you can find what you're looking for quickly and easily.

Document Management Desktop

Document Management Desktop brings the benefits of Document Management directly to the desktop of everyone in the office, independent of Opera 3. It allows instant retrieval and utilisation of documents stored within the Document Management database, and enables electronic capture of documents. Document Management Desktop users do not affect the Opera 3 user count and the application is available at a fraction of the price.

Improved user assistance

Opera 3 Help has been restructured and significantly improved, and now includes a What's New section and a How To section.

Enhanced user interface

You'll find navigating around Opera 3 easy, with the improved user interface delivering a fresh, modern look and feel, and a ribbon bar with meaningful icons to help make navigation easier.

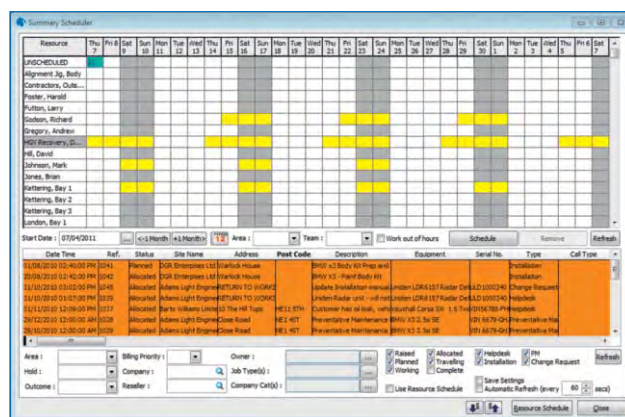
Service & Helpdesk Management enhancements

Batch Generate Preventative Maintenance Calls

Preventative Maintenance calls due for items in the Equipment Register can be created in bulk, saving valuable time. Choose how they operate, whether to use contracts which include preventative maintenance visits, or whether to simply maintain and service equipment items.

Summary Scheduler

The Summary Scheduler in Helpdesk Management provides the perfect solution for scheduling, rescheduling and viewing calls in bulk, rather than from the individual calls. A summary view of all resources can be displayed for the chosen month. Flexible filtering allows for more accurate planning such as Installation Calls Only, for engineers that work out of hours, or calls that are allocated to a specific department.



Summary Scheduler in Helpdesk Management

And yet more features

Other features added to Opera 3 to enhance your experience include: **new chart controls; modeless reporting; improved form functions through enhanced graphical representation, mouse wheel navigation and double click processing; and password expiry.**



The Step Up Programme: taking the next step

We'd like to thank you for using Pegasus software. To help our loyal customers manage change and future-proof their business, we've launched the Step Up Programme exclusively for Opera II customers.

Our product strategy starts with Opera 3, the platform of choice. We've built a technology platform for the future so your business has access to the latest technology and applications. And we're giving you more choice on deployment with Pegasus Business Cloud so you can reduce your total cost of ownership and pay monthly.

We'll guide you through the deployment options available, share our insight and give you the information and tools you need to help you upgrade to Opera 3, whether in the cloud or on-premise. Your Pegasus Partner will also be on hand to help with the transition.

When you move to Opera 3, you're putting your business in the best possible position to take advantage of future Pegasus solutions. So there's never been a better time to upgrade your Pegasus technology.

"Opera 3 takes away all the complexity involved in running a business, streamlining core processes and facilitating visibility from which to make decisions and pursue opportunities."

Tom Kerchiss, Managing Director, RK Printcoat Instruments

Top 5 reasons to step up to Opera 3

1. Cloud-ready: Opera 3 is now available in the cloud, so you can deploy it quickly and pay monthly.
2. Mobile-enabled applications with Pegasus Web Xchange, to meet the demands of a growing business.
3. Better reporting: open multiple reports simultaneously and perform dynamic searches for a better user experience.
4. Improve cashflow with the Credit Management Centre and manage customer debt more effectively and efficiently.
5. Innovative features: increase productivity with the ability to schedule routine tasks to run outside office hours, experience greater flexibility and versatility with error correction in the ledgers and open period accounting, and save on time and costs by emailing payslips and P60s.

For more information

Set aside some time to see the innovative features in action and the benefits of the cloud. Visit our YouTube channel:

www.youtube.com/user/PegasusSoftwareLtd

Contact your Partner about upgrading your Pegasus technology.



Take a look at the new features on www.pegasus.co.uk/demos.

Watch our video case studies to see how Opera 3 customers are benefiting at www.pegasus.co.uk/videos



Pegasus Software Orion House, Orion Way, Kettering NN15 6PE

T: 0800 919 704

T: +44 (0)1536 495000

F: +44 (0)1536 495001

E: info@pegasus.co.uk

www.pegasus.co.uk

 [@PegasusSoftware](https://twitter.com/PegasusSoftware)