

NEW CAPABILITIES

SCREEN
DESIGNER
ENTERPRISE SEARCH
WORKSPACE
GREENTREE4SALES

ENTERPRISE
SEARCH

GREENTREE4SALES

FLEXI-FORMS
WORKSPACE
FLEXI-FORMS
SCREEN
DESIGNER

Key Benefits

- Search it your way - configurable
- Search with what you know
- Enter any string; get results
- Flexible search filtering
- Search in context
- Global database search.

GREENTREE4'S TURBO-CHARGED SEARCH ENGINE

If you're looking for a needle in a haystack, at least you know you're looking for a needle. One of the big issues with searching a business database is you often don't know what the needle looks like or which haystack it's hiding in. Getting thousands of results is just as unhelpful as getting none. And it is not a problem that's standing still; as your database grows, the find-ability issue only gets bigger.

Greentree4's Enterprise Search has tackled this head on with the kind of search functionality usually reserved for global search engines. It lets you search the database simply by entering a string of letters or numbers. Instead of randomly tossing up results, you control and configure the way it searches. You choose what the system indexes, and how it presents and groups search results. You can search within your database and get relevant results almost instantly.

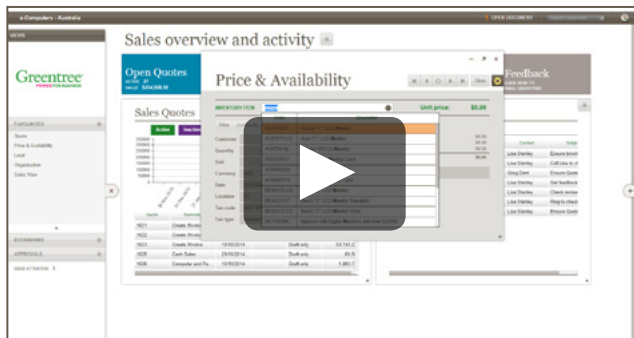
Search everywhere

Greentree4's global Enterprise Search is located on the main taskbar, which is always in view and accessible. Simply type in the phrase or partial phrase you are looking for. Best of all, one tiny piece of related information is searchable.

If you're looking for a company name you can find it using part of a phone number, part of a contact name, or part of an address. If you're in logistics and want to find a product you can enter part of its name, the supplier part number or even data from custom fields you've added. No matter what you're looking for, you can be confident of finding it.

Search in context

Search results appear in a drop-down list. They are pre-sorted against logical pre-loaded categories such as organisations, quotes, inventory etc. Whilst we have pre-configured these, you can add to or change the categories based on the kind of information you want to regularly access.



Take a look at how Enterprise Search works.
<http://youtu.be/DFG16TH7FUw>

Search index

Enterprise Search also provides the opportunity for you to expand what the system searches on. To simplify results we have predetermined a range of indexed fields that are commonly used when searching. If you have a specific search requirement, or have created user-defined fields you want to search on, you can simply configure the system to include this in the search index. For example, organisations might include the company's name or address, but if you rely heavily on membership numbers or meeting notes, then these fields can be indexed as well.

Search asterisk

The 'asterisk' next to the menu bar search field offers a drop-down to access the available configured options. You can quickly select the category you want to search on to further refine your search results: for example, if you want the search to bring up business & people-related results as opposed to those categorised under inventory. The results will still appear under the assigned categories.

Search by what you know

Enterprise Search starts looking for results the second you type in three characters. The more information you type in, the more refined the search becomes. You can choose to execute "starts with", "contains" or "exact word" searches if that helps. At the bottom of the search results a "See expanded results" field gives you the option of expanding your search by dropping off any common prefixes or suffixes based on the word you've entered - no need to enter any further data.

Search in fields

Selected fields within **Flexi-Forms** are dynamically searchable. Because you are in a form, Enterprise Search already understands the context it is searching within. For example, if you are in the 'Organisation' field in a quote form it will be searching the database for existing organisations. Enterprise Search will also remember the steps you've taken, so if you've searched and found an organisation and then go looking for a quote number, it will only return results relating to that organisation.

Ever-ready search

If you do a lot of data entry, Enterprise Search doesn't intrude. You'll probably power through most of the fields on a form without hesitation – but if you do get stuck the mere fact you've paused will trigger a search and bring up suggested results based on the pre-determined criteria identified for that field. It significantly speeds up the data entry process and means relevant information is presented to you automatically – without you having to stop and search for it. You're not only faster but more accurate, and isn't that what every business is searching for?

Note: Enterprise Search will search your entire database, but 'drill-down' currently extends only to areas of the database that support Greentree4Sales.

YOU MAY ALSO BE INTERESTED IN:

- [Greentree4Sales](#)
- [Flexi-Forms](#)
- [Workspace](#)
- [Screen Designer](#)
- [Access & Reporting](#)

WHY GREENTREE?



MANY SOFTWARE PACKAGES COME WITH ADD-ONS, COMPROMISES AND HALF-HEARTED SOLUTIONS.

Greentree believes you need the reassurance of business software that is both comprehensive and integrated, breaking down barriers and powering you to get on with business.

Responsive and flexible, Greentree provides you with a wide variety of modules and sub-modules rarely found in other packages. You switch on the pieces you need, effectively matching the system to fit your business. As your business evolves, Greentree grows with you.

Exploit its accuracy in business metrics; challenge its capability to deliver insightful information. Greentree eradicates long, complicated tasks and effortlessly manages change, to help grow business potential.

Whatever the need, Greentree gives you choices that are cost-effective and proven. Thousands of companies, large and small, have at their fingertips Greentree's simple, smart thinking that empowers better decisions, better prospects.

And, with a partnership network that spans many countries, Greentree is totally accessible. Your unique needs will drive the way Greentree and its partners respond to you. If the only thing missing from this equation is your business, then get in touch – after all, three heads are better than one.

GET READY TO BE PRIMED FOR BUSINESS.